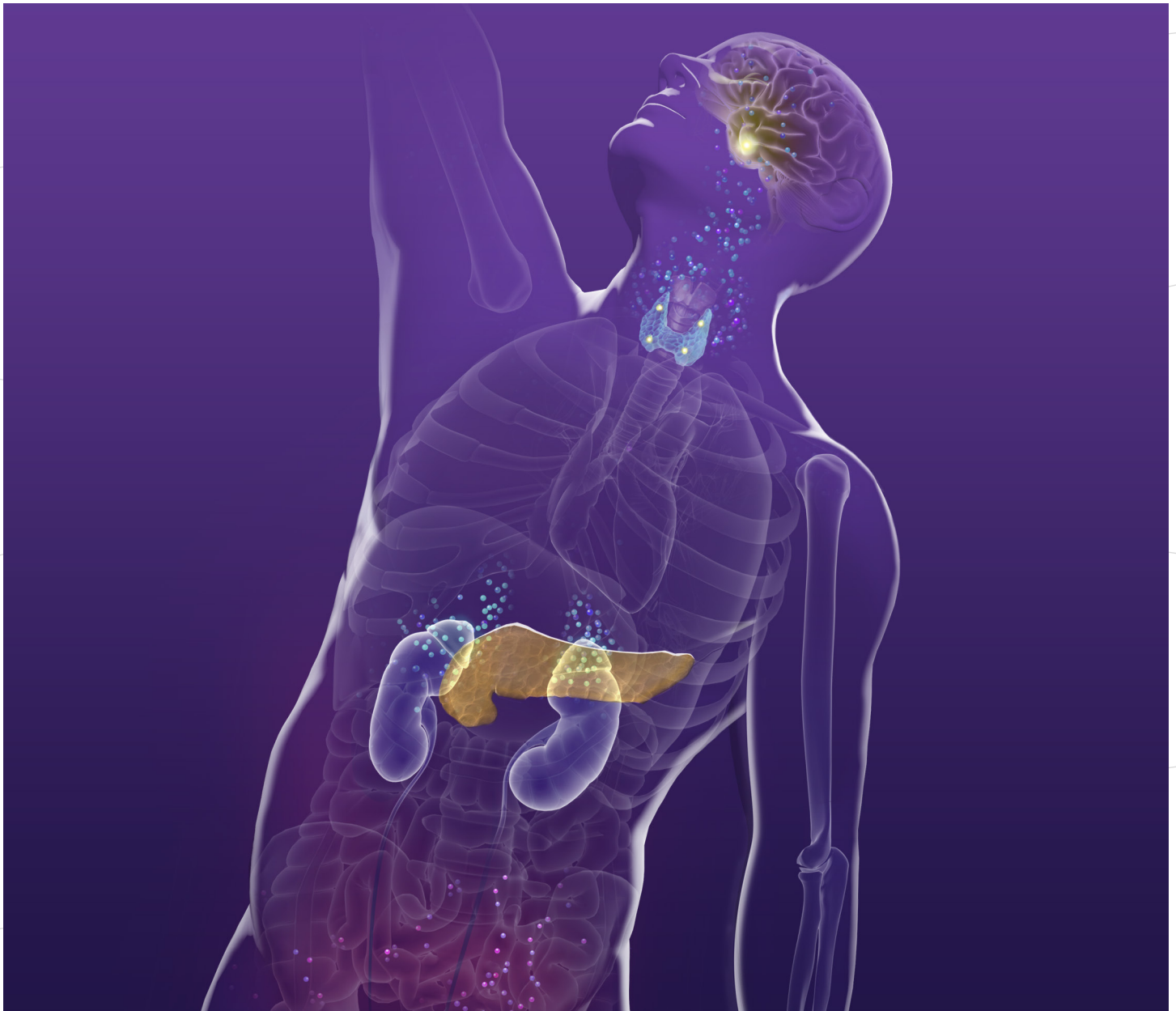




MAYO CLINIC
Mayo Medical Laboratories

ENDOCRINOLOGY

ADVANCING THE DIAGNOSIS AND MANAGEMENT OF ENDOCRINE FUNCTION DISEASE



WHY MAYO CLINIC?

Accurate and dependable endocrine function testing is one of the cornerstones of the Mayo Clinic practice. Standardization of procedures and protocols is essential for the reliable interpretation of dynamic endocrine testing results.

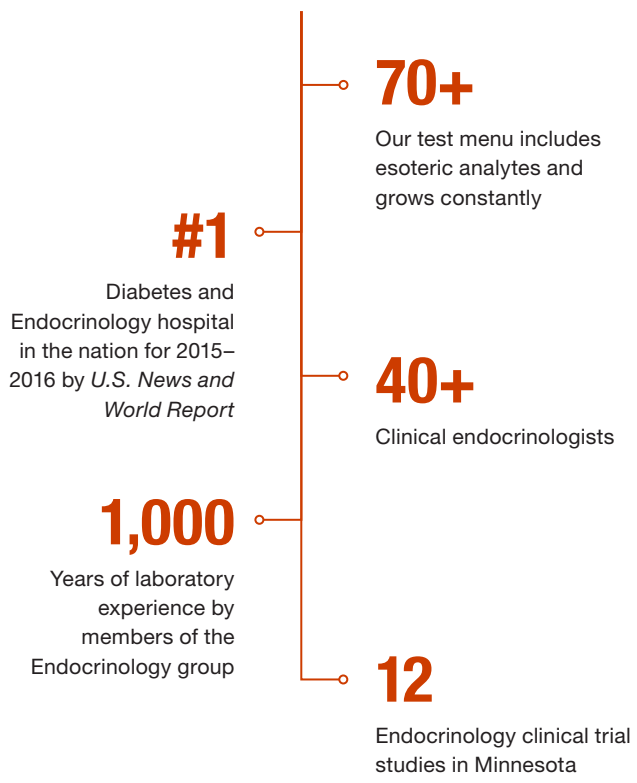
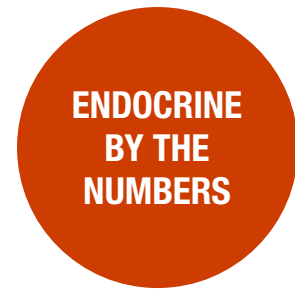
Our test menu includes more than 70 common and esoteric analytes and grows constantly. We strive to use the best-suited methodology for every test, ranging from manual immunoassays over mass spectrometry to molecular testing.

WE FOCUS ON TURNAROUND TIME, NOT JUST TRANSIT TIME

Mayo Medical Laboratories is a global reference laboratory operating within Mayo Clinic's Department of Laboratory Medicine and Pathology, one of the largest clinical laboratories in the world.

- ▶ We perform testing for Mayo Clinic patients and provide reference laboratory services to more than 4,000 hospitals and laboratories in more than 70 countries worldwide.
- ▶ More than 23 million tests are performed annually.
- ▶ International specimens receive the same care and turnaround times as Mayo Clinic samples.
- ▶ Faster results are realized than at other reference laboratories because we perform our tests daily for Mayo Clinic patients.

Email mmlglobal@mayo.edu



ACCESS TO MAYO CLINIC PHYSICIANS, SCIENTISTS, AND LABORATORY PROFESSIONALS

As part of the Mayo Clinic integrated group practice, we treat patients every day. Our services enable our clients to:

- ▶ Collaborate with Mayo Clinic physicians, scientists, and laboratory professionals on test selection, results interpretation, and clinical care guidance.
- ▶ Apply patient-focused testing approaches.
- ▶ Promote local health care delivery.

ENDOCRINOLOGY CATEGORIES AND SUBCATEGORIES

THYROID

- ▶ Nodules
- ▶ Rare thyroid diseases
- ▶ Thyroid cancer
- ▶ Thyroid dysfunction (hyper-/hypo-active)

ADRENAL / GONAD / PITUITARY

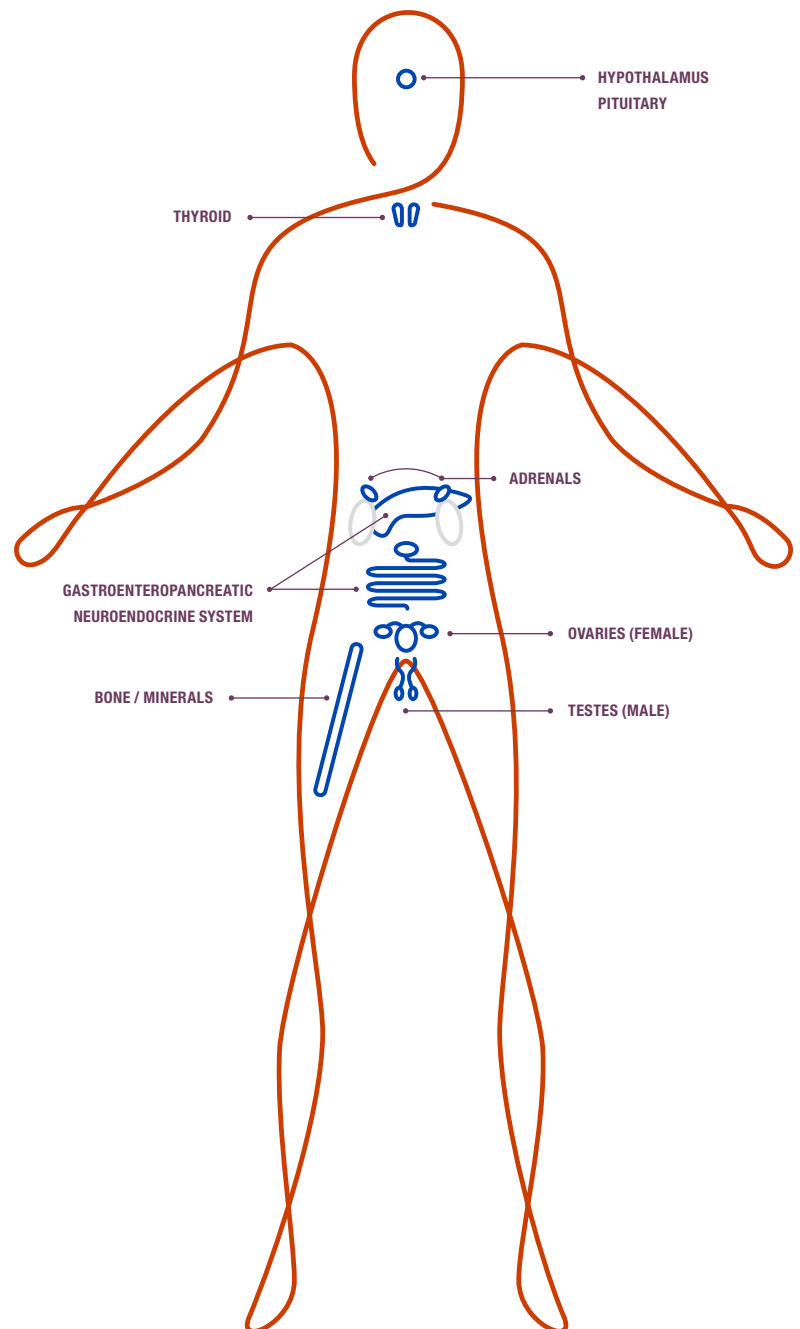
- ▶ Adrenocortical carcinomas
- ▶ Adrenal failure
- ▶ Adrenomedullary tumors (pheochromocytomas)
- ▶ Growth disorders
- ▶ Hormonally active adrenocortical tumors
- ▶ Hormonally silent adrenocortical tumors
- ▶ Hypogonadism
- ▶ Inherited conditions of steroid metabolism (21-hydroxylase deficiency and others)
- ▶ Neuroendocrine tumors
- ▶ Pituitary tumors
- ▶ Steroid-secreting gonadal tumors

BONE / MINERALS

- ▶ Disorders of calcium, phosphate, parathyroid hormone and vitamin D (and metabolites)
- ▶ Metabolic and inherited bone diseases
- ▶ Osteoporosis

DIABETES / METABOLIC / NUTRITION

- ▶ Diabetes mellitus
- ▶ Dyslipidemias
- ▶ Malnutrition
- ▶ Metabolic syndrome and insulin resistance
- ▶ Various inborn error of metabolism



PERFORMING THE RIGHT TESTS, NOT THE MOST TESTS

LIKE YOU, WE ARE A HEALTH CARE PROVIDER, TREATING PATIENTS EVERY DAY, AND OUR SERVICES ENABLE HEALTH CARE INSTITUTIONS TO:

- ▶ Apply patient care-driven testing approaches.
- ▶ Establish clinically proven test utilization strategies.
- ▶ Collaborate with Mayo Clinic physicians, scientists, and laboratory professionals.
- ▶ Advance the integration of community health care delivery.

TAP INTO THE EXPERTISE OF MAYO CLINIC

LABORATORY DIRECTORS

1 STEFAN GREBE, M.D., PH.D.

*Endocrinologist and Clinical Chemist
Professor of Laboratory Medicine and Pathology*

2 RAVINDER J. SINGH, PH.D.

*Clinical Chemist
Professor of Laboratory Medicine and Pathology*

3 ALICIA ALGECIRAS-SCHIMNICH, PH.D.

*Biologist/Immunologist and Clinical Chemist
Associate Professor of Laboratory Medicine and Pathology*



The Endocrine Laboratory within Mayo Clinic is one of the leading endocrine testing facilities in the United States, with a track record of excellence for several decades. Its achievements include development of the first commercially available immunometric whole molecule parathyroid hormone assay, pioneering work in establishing steroid and vitamin D testing by mass spectrometry, and co-development of several widely used immunoassays in the in vitro diagnostic industry.

The clinical and research activities of the Mayo Clinic Endocrine Laboratory focus on providing the highest quality and most advanced laboratory support possible for the diagnosis and management of human endocrine disorders.

FOR MORE INFORMATION ABOUT ENDOCRINE TESTING

MayoMedicalLaboratories.com/endocrinology