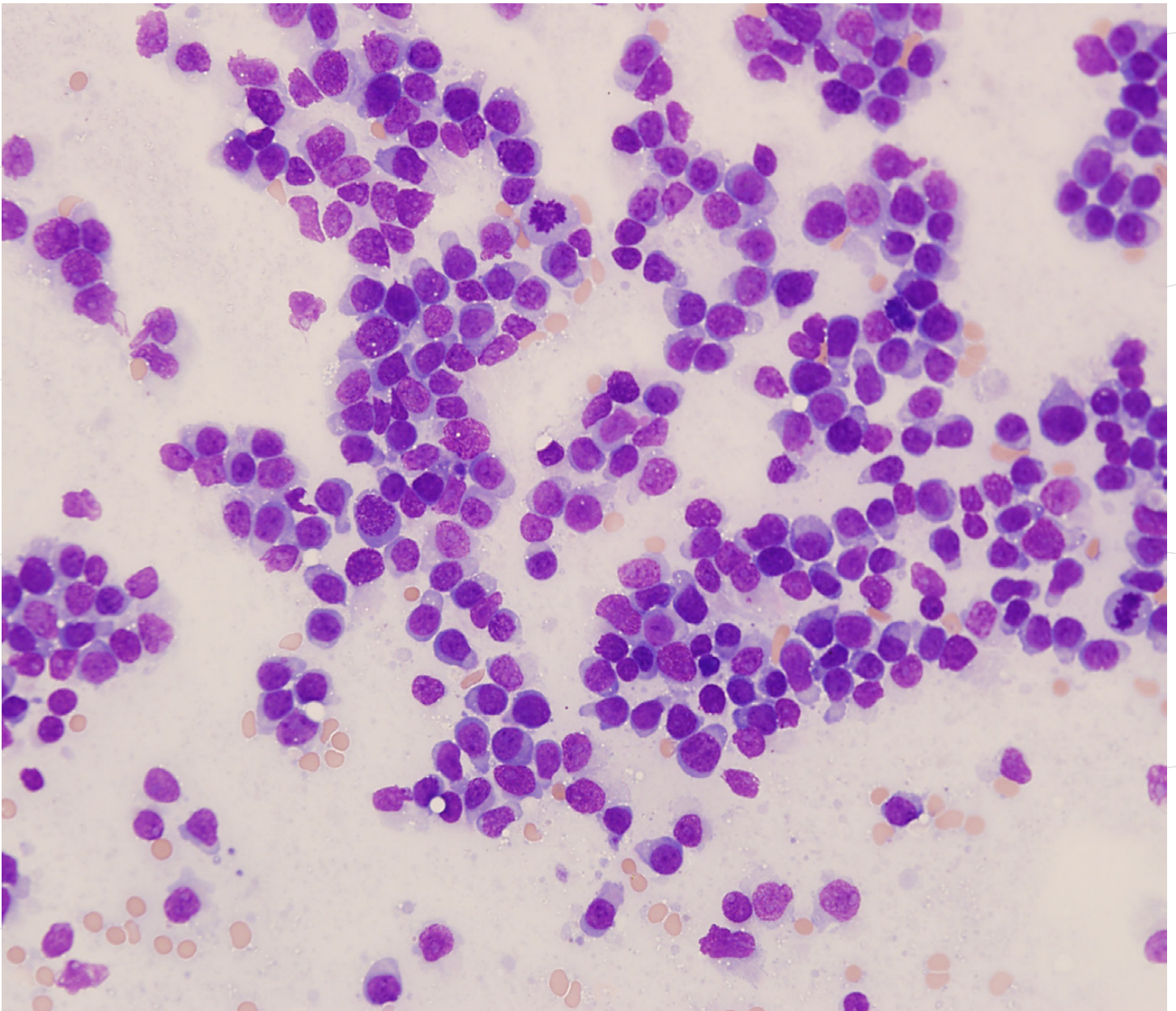


**PLASMA CELL PROLIFERATIVE DISORDERS**  
**PHYSICIAN CHOICE GUIDED BY MAYO STRATIFICATION FOR**  
**MYELOMA AND RISK-ADAPTED THERAPY (mSMART)**

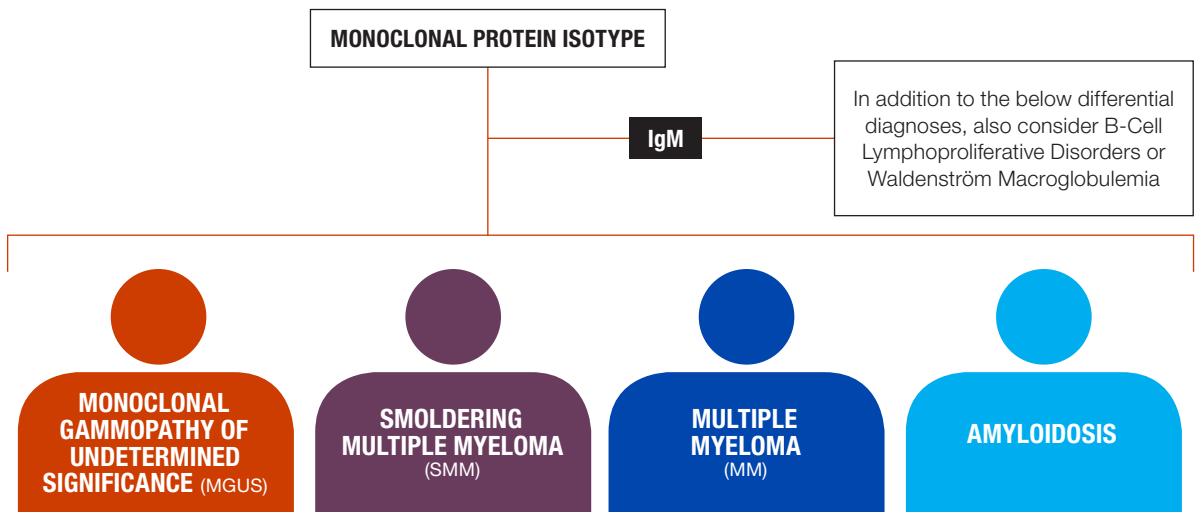


# STRATIFYING RISK AND INDIVIDUALIZING TREATMENT

Multiple myeloma is increasingly recognized as more than one disease, characterized by marked cytogenetic, molecular, and proliferative heterogeneity.

The Mayo Stratification for Myeloma and Risk-Adapted Therapy (mSMART) algorithm stratifies patients into low, intermediate, standard or high-risk categories. This genetically determined risk classification also plays an important role in individualizing a patient’s treatment strategy.

## PATIENTS WITH MONOCLONAL PROTEIN DISORDERS

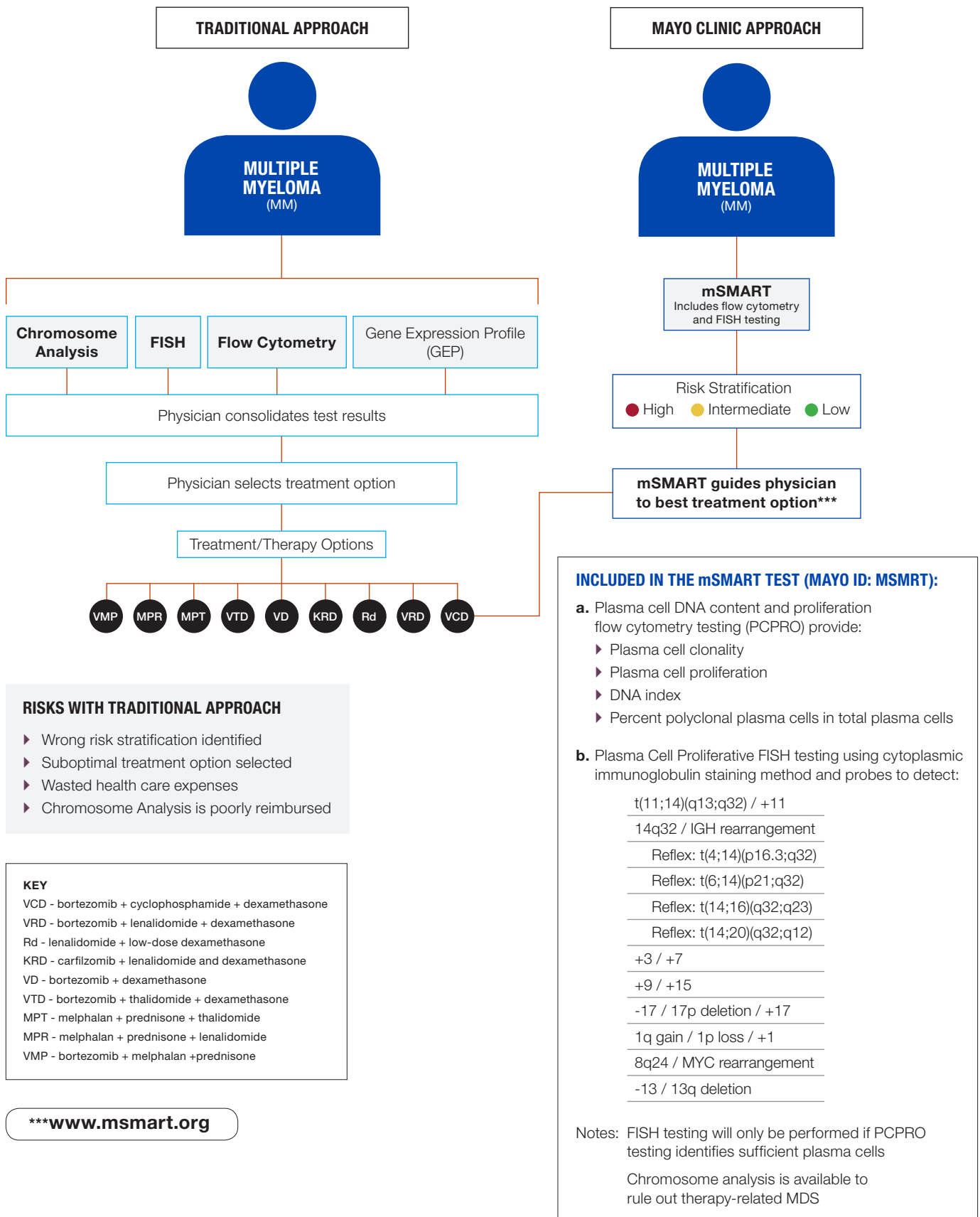


<b>CHARACTERISTICS</b>	<b>PREVALENCE IN PATIENTS WITH MONOCLONAL GAMMOPATHY</b>	58%	4%	17.5%	10%
	<b>PROGRESSION TO MULTIPLE MYELOMA</b>	10-15% within 10 years 25-30% within 20 years	50% over 5 years	5 year survival rate is ~30%	Uncommon
	<b>BONE MARROW MONOCLONAL PLASMA CELLS</b>	<10%	≥10%	≥10%*	Any %
	<b>SERUM M-SPIKE</b>	<3g/dL	≥3g/dL	Variable (typically ≥3g/dL)	Any amount
	<b>END-ORGAN MANIFESTATIONS (CRAB)**</b>	No	No	Yes	Depends on the affected organs
	<b>TREATMENT REQUIRED</b>	No	Clinical trials available	Yes, and can be guided by mSMART	Yes
	<b>OTHER PLASMA CELL DISORDERS</b>	Amyloidosis, Lymphoplasmocytic disorders, Plasmacytoma and POEMS syndrome		Plasma cell leukemia	NA

\* **PATIENTS WITH ANY ONE OF THESE 3:**  
 >60% plasma cells  
 >100 Kappa/Lambda Free Light Chain ratio  
 >1 MRI lesion

\*\* **KEY**  
 C - Hypercalcemia  
 R - Renal Insufficiency  
 A - Anemia  
 B - Bone Disease

# PHYSICIAN CHOICE GUIDED BY MAYO STRATIFICATION FOR MYELOMA AND RISK-ADAPTED THERAPY (MSMART)



## COLLEGIAL ACCESS TO MAYO CLINIC CLINICIANS, LABORATORIANS, AND GENETIC COUNSELORS

Mayo Medical Laboratories supports the local delivery of health care services, so when assistance with testing options, result interpretation, or case review and coordination is needed, Mayo Clinic clinicians, laboratorians, and genetic counselors are available to provide assistance. This rapport also provides the opportunity for general practice discussions among colleagues.

**Telephone** 855-516-8404

**Email** [rstmmlhematology@mayo.edu](mailto:rstmmlhematology@mayo.edu)

## FOR MORE INFORMATION ABOUT mSMART TESTING, VISIT

[MayoMedicalLaboratories.com/myeloma](http://MayoMedicalLaboratories.com/myeloma)