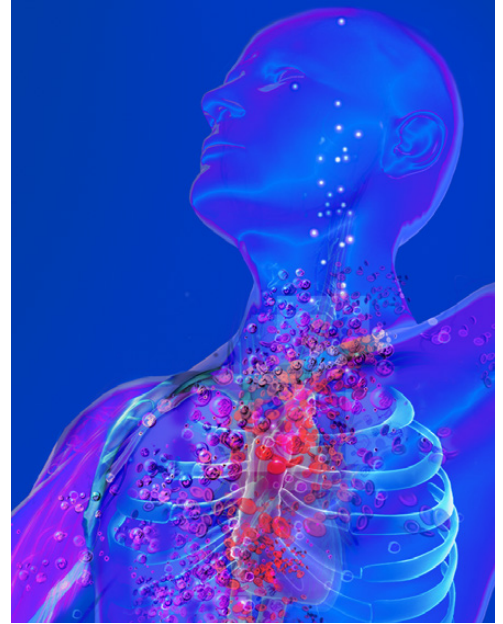


Current Status of Clinical Laboratory Testing of Plasma Cell Neoplasms: A Case-Based Approach

Hilton Orlando, Ballroom 3
Orlando, Florida
December 6, 2019



Friday, December 6, 2019

7:00–7:25 a.m.	Pre-Conference Check-In/Registration
7:25–7:35	Introduction
7:35–8:00	A Sensitive and Specific Mass Spectrometry-Based Test for Monoclonal Gammopathies PRESENTED BY: DAVID MURRAY, M.D., PH.D.
8:00–8:35	Plasma Cell Neoplasms – Evaluation of Peripheral Blood and Bone Marrow PRESENTED BY: DRAGAN JEVREMOVIC, M.D., PH.D.
8:35–9:00	Plasma Cell Specific FISH - A Robust Method for Prognostication in Multiple Myeloma PRESENTED BY: PATRICIA GREIPP, D.O.
9:00–9:25	NGS-Based Detection of Structural Rearrangements and Copy Number Abnormalities in Plasma Cell Neoplasms PRESENTED BY: LINDA BAUGHN, PH.D.
9:25–9:35	Q&A
9:35–9:55	Refreshment Break
9:55–10:20	Hematopathology Evaluation for Lymphoplasmacytic Lymphoma/Waldenstrom Macroglobulinemia PRESENTED BY: RONG HE, M.D.
10:20–10:45	Amyloid Protein Identification by Mass Spectrometry PRESENTED BY: ELLEN MCPHAIL, M.D.
10:45–10:55	Q&A
10:55	Adjourn